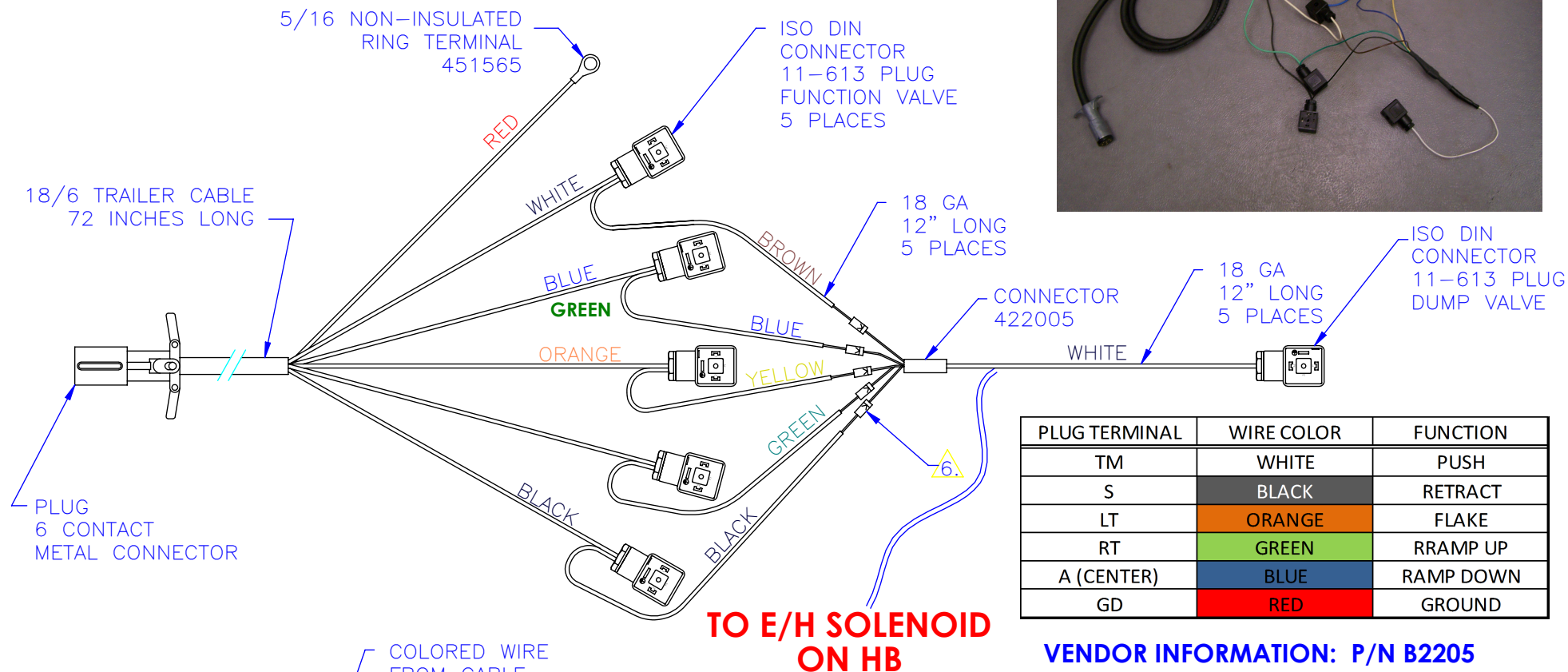
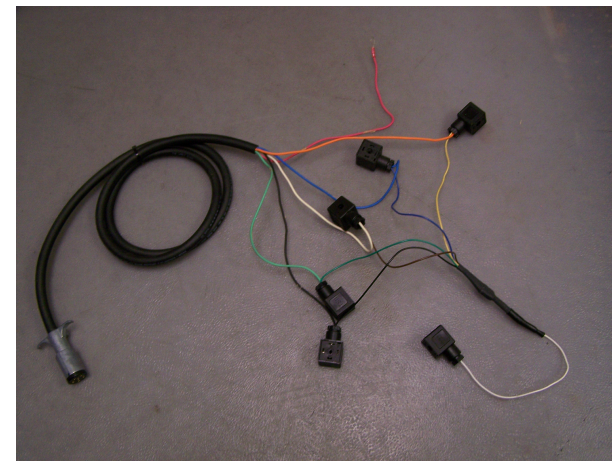


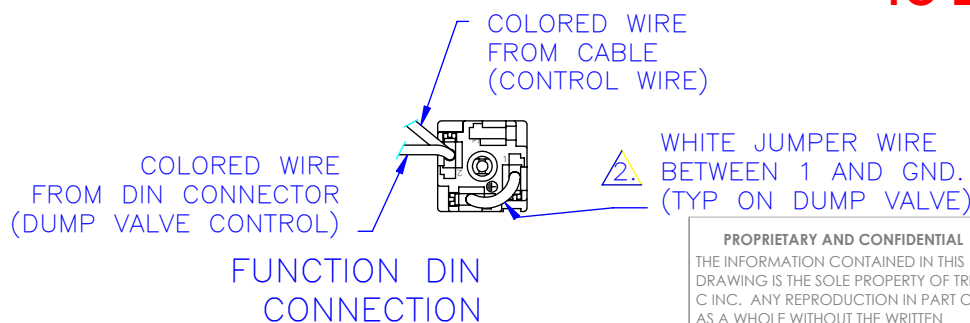
# NOTES:

1. EXPOSE 12 INCH LEADS AND STRIP 1/2 INCH.
2. DIN JUMPER WIRE IS 2 INCHES, STRIP 7/16 INCH.
3. INSTALL FUNCTION DIN CONNECTORS WITH REMOVAL NOTCH SAME DIRECTION AS 90° BEND AS SHOWN.
4. INSTALL DUMP VALVE DIN CONNECTOR WITH TERMINAL 2 SAME DIRECTION AS 90° BEND AS SHOWN.
5. MUST PROVIDE WEATHER SEAL AT CONNECTOR OPENING.
6. INDIVIDUALLY SHRINK WRAP EACH RECTIFIER THEN SHRINK WRAP ALL RECTIFIERS TOGETHER.

## ON ELECTRIC/HYDRAULIC USE ONLY



VENDOR INFORMATION: P/N B2205



**PROPRIETARY AND CONFIDENTIAL**  
THE INFORMATION CONTAINED IN THIS DRAWING IS THE SOLE PROPERTY OF TRIPLE C INC. ANY REPRODUCTION IN PART OR AS A WHOLE WITHOUT THE WRITTEN PERMISSION OF TRIPLE C INC. IS PROHIBITED.

DIMENSIONS ARE IN INCHES  
TOLERANCES:  
FRACTIONAL  $\pm 1/16$   
ANGULAR: MACH  $\pm 1$  BEND  $\pm$   
TWO PLACE DECIMAL  $\pm 010$   
THREE PLACE DECIMAL  $\pm 005$

MATERIAL ---  
DO NOT SCALE DRAWING

NAME	DATE
DRAWN HEATH	1/29/2014
PART # FP-HFL-913	
ASM #	

COMMENTS:  
FLAKER VALVE HARNESS, DIN SECTION

P.O. BOX 248,  
SABETHA, KS 66534

**TRIPLE C**  
INC.

SIZE	DWG. NO.	REV.
A	40-1902	A

SCALE: 1:1 WEIGHT: --- SHEET 1 OF 1